

SC200/200LV PASSENGER HOIST

Frequency Inverting Hoist



SC200/200LV passenger hoist is equipped with the latest technology. High quality material and high safety level are the main features of the hoist. With the assistance of frequency inverting technology and carefully selected humanized configuration, the user will easily gain the ultimate operating experience. ASIATECH's passenger hoist has been vastly praised for its safety protections and long life among users.

Double Cage

Load: 2000KG/cage

Speed: 0-46m/min

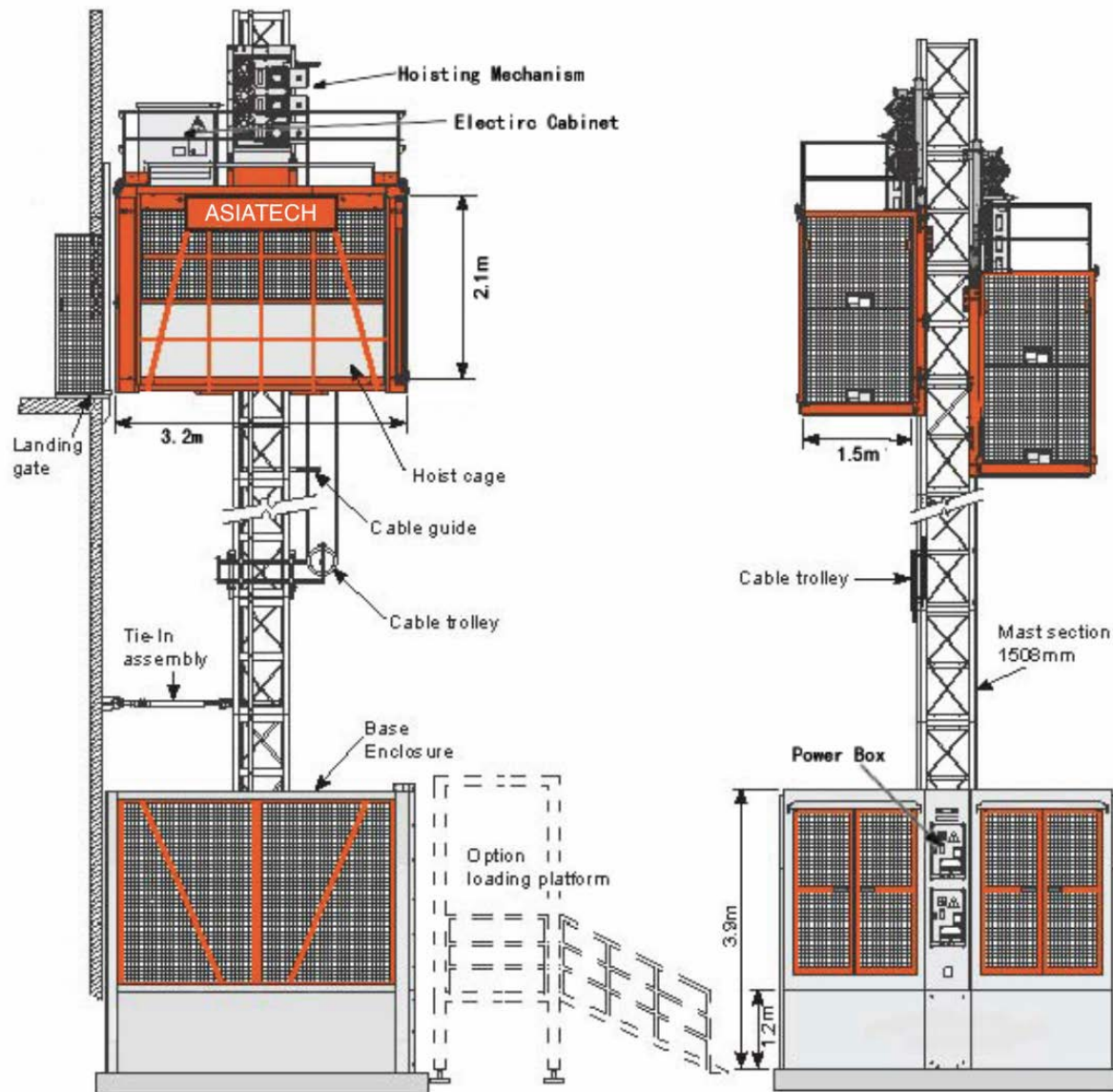
Cage: 3.2x1.5x2.1m

Motor Power: 11kw x 3 x 2

Frequency Inverting Technology



Configuration



Main Features

- * Galvanized cage plus plastic coating enlarge the life time of cage.
- * Reduced size of electric control box provides more space for material carrying.
- * The resistance models inside the cage to prevent the damage of inverter by rain.
- * Carefully placed limit switches bring more safety during work.
- * Better safety device and reducers comparing to other manufacturers in the industry.

Cage

Cage Size: 3.2x1.5x2.1m
 Cage Material: Galvanized/Painted
 Driver's Cabin: Available (Optional)
 Wall plate material: Aluminum
 Cage Loading Capacity: 2000KG/cage

Motor

Brand: ZHANGJIANG
 Power: 11KW x 3 x 2
 Hoist Speed: 0-46m/min

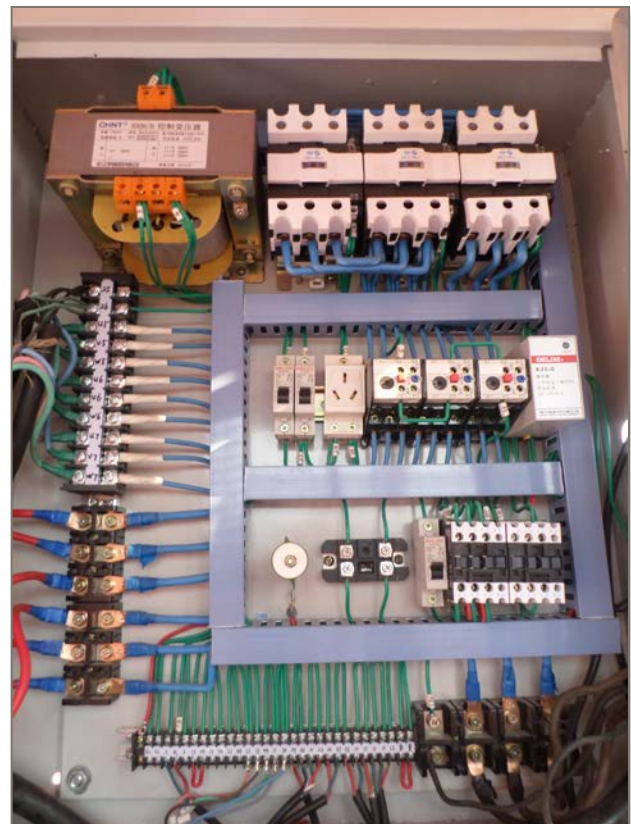


Mast Section & Tie-in

Dimension: 650 x 650 x 1508mm
 Material: Painted/Galvanized/DACROMAT
 Tube Thickness: 4.5mm



Electric Box

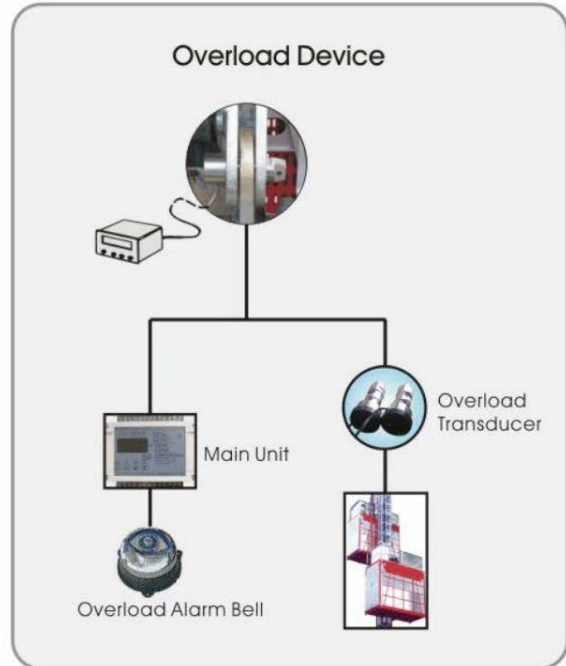


SAFETY

Limit Switches



Overload Device



Safety Device

